

INSTRUCTION SHEET

BULLETIN 511 TYPE "S" 5½" D-c Brake

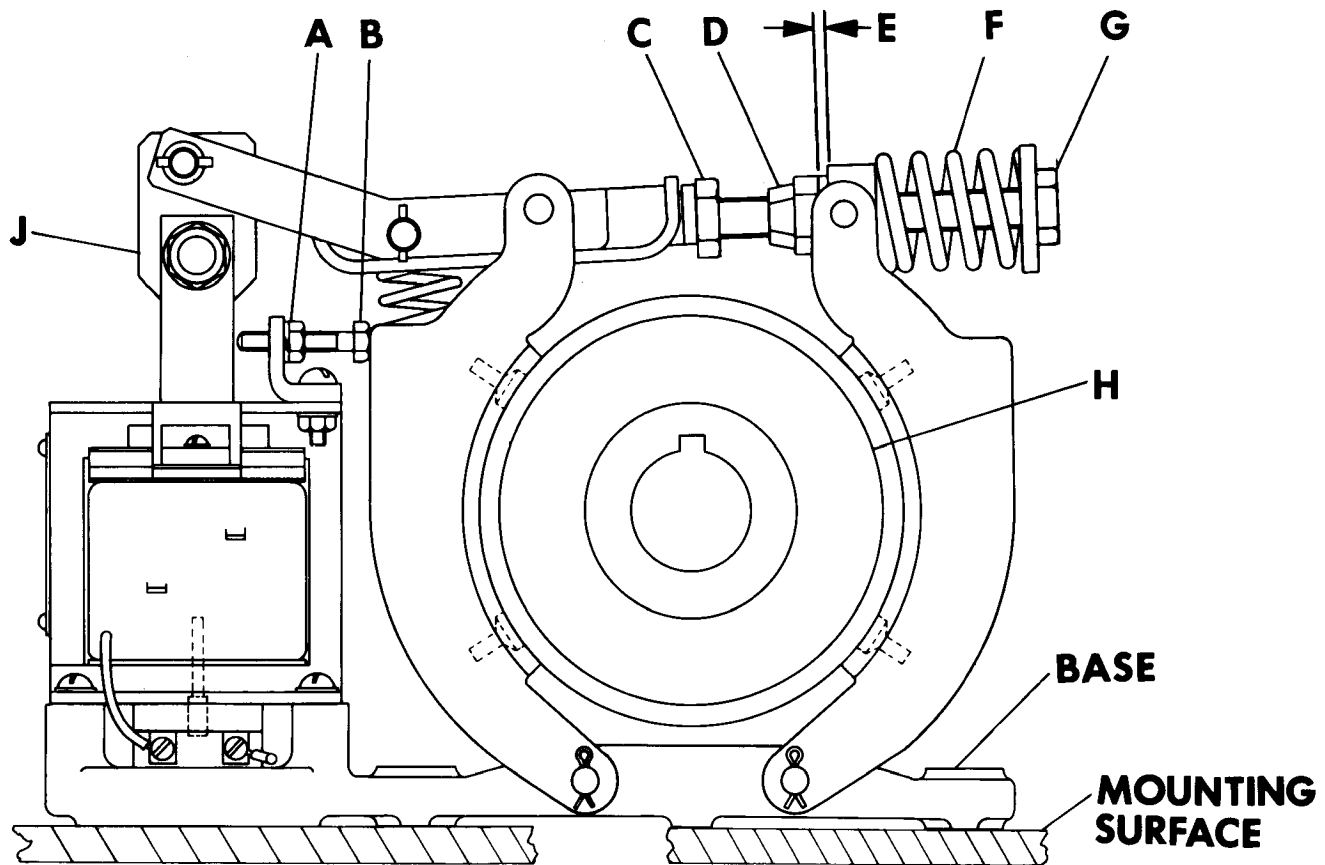


Figure One

1. MOUNTING — (Refer to Figure One)

Push the solenoid plunger "J" down to separate the brake shoes. The brake can then be slid over the wheel "H". The center of the wheel should be approximately four (4) inches above the mounting surface. Release the plunger to allow the brake shoes to grip the wheel. Insert shims between the mounting surface and the brake base until the brake is resting solidly on the mounting surface. Then fasten the brake to the stand with mounting screws or bolts.

NOTE — These brakes must be mounted in a horizontal position with the base below the solenoid and shoes.

2. EQUALIZE SHOE CLEARANCE

Push the solenoid plunger "J" down to release the brake wheel "H". Loosen locknut "A", equalize clearance between the shoes and wheel "H" by turning screw "B". When adjustment is completed tighten lock nut "A".

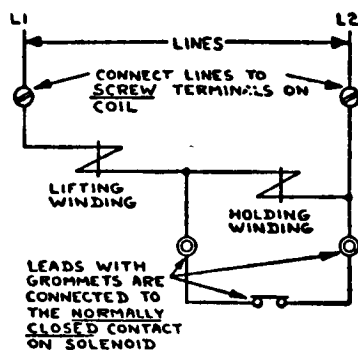
3. READJUSTMENT FOR LINING WEAR

As the lining wears, the clearance "E" decreases. Never permit this clearance to become zero because complete loss of braking torque will result. When the clearance "E" becomes low, readjust to 0.015" by turning nut "D". Locknut "C" prevents the shaft from rotating when this adjustment is performed. No change in torque will result from this adjustment. NOTE: Brake linings should be renewed before the rivets that hold the lining in place are allowed to touch the wheel face. Repeat step no. 2.

4. TORQUE ADJUSTMENT

The brake is adjusted at the factory to provide the rated torque shown on the nameplate. To set the brake for rated torque, loosen locknut "C" and, while holding nut "D", turn bolt "G" to obtain the approximate compressed spring length specified below. Retighten locknut "C" and recheck clearance "E".

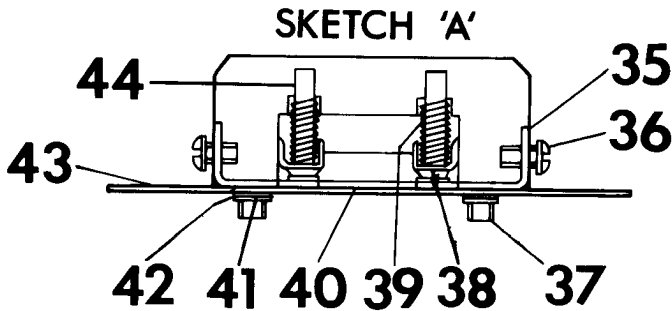
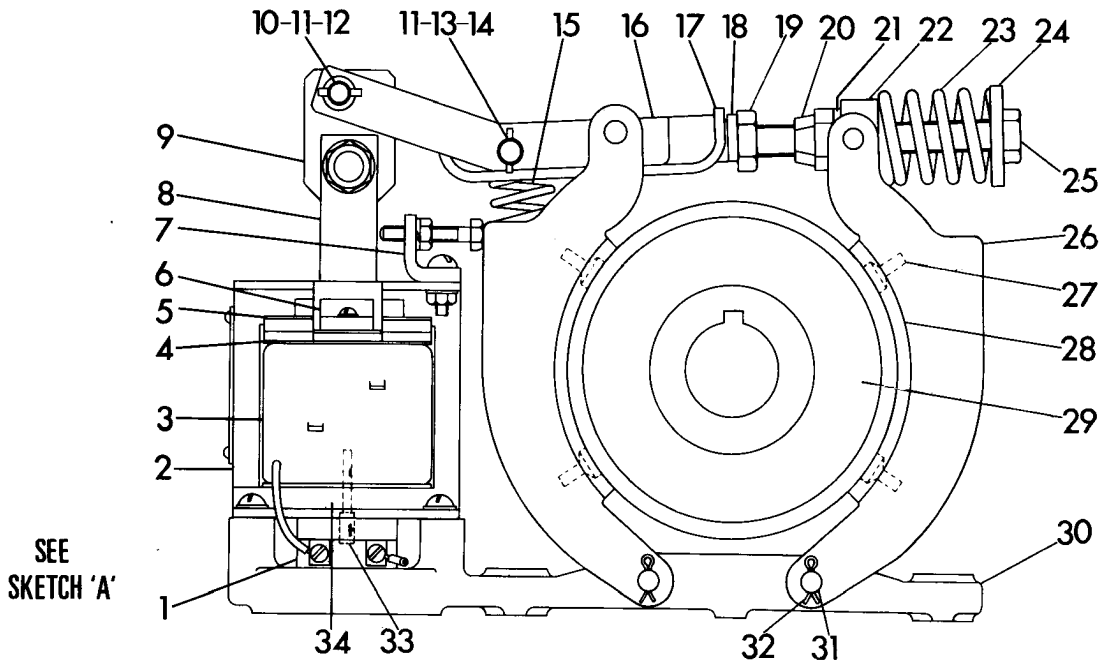
NOTE: After any brake adjustment is made, recheck the shoe-to-wheel clearance in step no. 2.



Size of Brake	Torque Rating	Compressed Length of Spring "F"
5½"	25 Lbs. Ft.	1¾"
5½"	35 Lbs. Ft.	1¾"

### RENEWAL PARTS — Information Required

Parts CANNOT be sent promptly unless you include the FOLLOWING with your order: PUBLICATION NO. 17378, ITEM NO., PART NO., DESCRIPTION and COMPLETE NAMEPLATE DATA ON THE BRAKE



Item No.	Description	No. Req.	Part No.
1	Switch complete (includes items 35 thru 41)	1	10-1510-4
2	Solenoid frame	1	17-10473
▲ 3	Coil (Give No. on Coil)	1	
4	Washer	2	16-254
5	Spring	2	69-273
6	Plunger guide	2	54-300-2
	10-32x.31 R.H. screw	3	911-490Z
	#10 helical washer	3	916-484Z
7	Bracket	1	79-415
	¼ helical washer	1	916-682Z
	¼-20x1.50 screw	1	911-5452Z
	¼-20 hexagon nut	1	915-24Z
8	Plunger	1	51-93-12
9	Link	1	51-2220
10	Spacer	3	56-2561-4
11	.125x.75 spring pin	4	13-3187-2
12	Pin	1	13-7638
13	Pin	1	13-317-9
▲ 14	¾ washer	2	816-808
▲ 15	Torque spring	1	69-4575
16	Lever	2	24-7534
17	Spring gland	1	49-5637
18	Adjusting stud nut	1	15-1894
19	½-13 hex nut	1	915-1401Z
20	½-13 locknut	1	15-610
21	Washer	1	916-1201Z
22	Pivot block	1	17-16951
23	Torque spring	1	69-287
24	Cup washer	1	16-3424
25	Adjusting bolt	1	11-4719
26	Shoe assembly (includes items 27 and 28)	2	48-1787
27	Flat head groov pin	8	13-4762
28	Lining	2	48-1605
*29	Brake wheel (see below)	1	
30	Base	1	17-10475
31	Pin	2	13-474
32	.094x.62 cotter pin	4	913-41Z
33	Pin	1	13-620-5
34	Solenoid without coil (includes items 2, 4, 5, 6 and 8)	1	88-521-5
35	Stationary contact	4	21-716
36	6-32x.31 bdg. hd. screw	4	811-129
37	10-32x1.375 RH screw	2	911-524Z
	Washer	2	16-139
	Lockwasher	2	916-484Z
38	Movable contact	2	21-291
39	Spring	2	69-920
40	Insulator	1	56-3574
41	#10 Retaining washer	2	16-2038-4
42	"O" ring	2	32-239-28
43	Insulator	1	56-3573
44	Pin	2	13-2107-5
45	Renewal set of linings (consists of items 27 and 28)	1	6-166-2

▲ We recommend that these items be stocked, the quantity to be stocked will depend upon the total number in use.  
 \* Give the index "H" No. when it is stamped on the wheel, or if this number does not appear on the wheel, give the complete brake nameplate data and the bore and keyway dimensions.