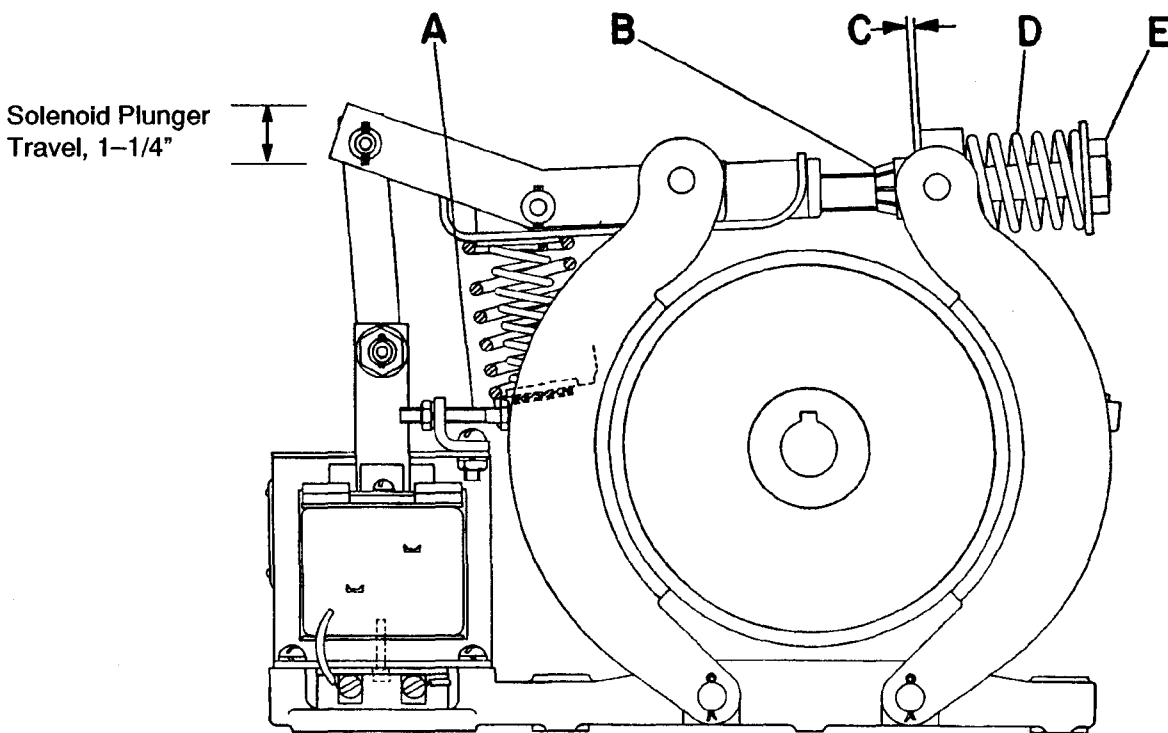


INSTRUCTION SHEET

Bulletin 511 Type "S" 7" DC Brake



INSTRUCTIONS

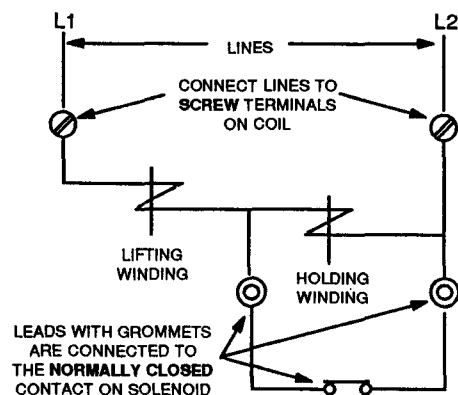
1) **Mounting** – (Refer to Dimension Drawing) – Push the solenoid plunger down to separate the brake shoes. The brake can then be slid over the wheel. Release the plunger to apply the shoes against the wheel. Insert shims between the mounting stand and the brake base until the brake is settling solid on the stand. Then fasten the brake to the stand with mounting screws or bolts. NOTE: These brakes should be mounted in a **horizontal position** with the base below the solenoid and shoes. Side or vertical mounting can result in accelerated wear of the solenoid.

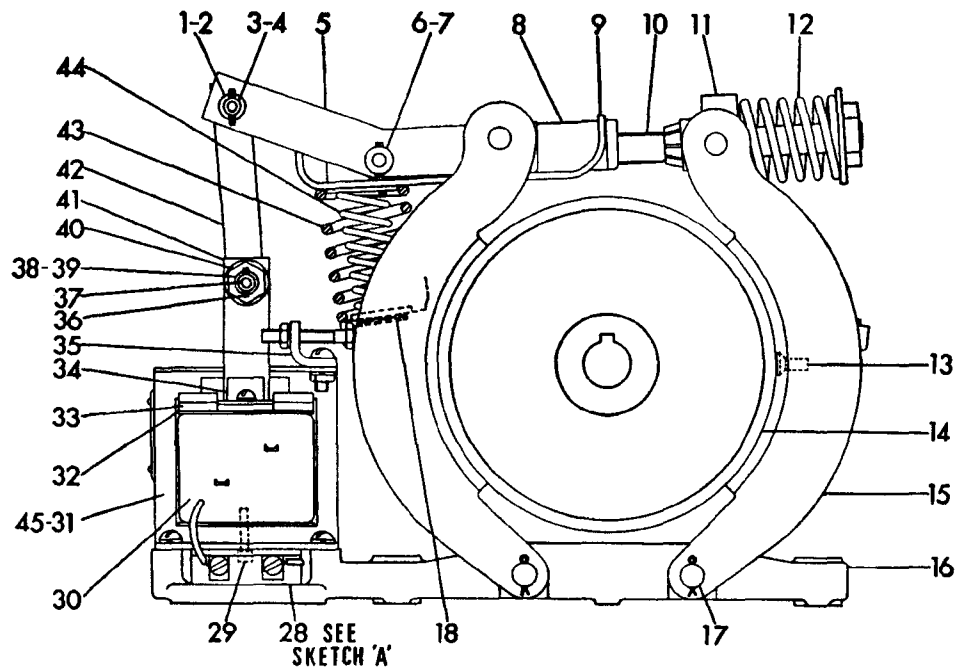
2) **Equalize Shoe Clearance** – With the brake released (solenoid plunger down), equalize the clearance between the shoes and wheel with screw "A". Be sure to tighten the lock nut when the adjustment is completed.

3) **Adjustment** – The brake is adjusted at the factory to provide the rated torque shown on the nameplate. If the load is stopped too rapidly and a lower torque is desired, increase the compressed length of spring "D" by holding nut "B" to prevent rotation while turning nut "E" counter-clockwise. When the desired torque is obtained, be sure that the clearance "C" is $1/64$ " and travel of the solenoid plunger should be $1-1/4$ ".

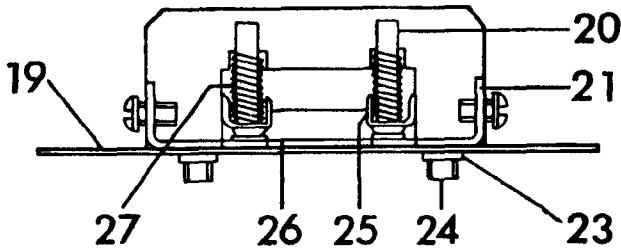
4) **Readjustment for Lining Wear** – As the lining wears, the clearance "C" decreases. Never permit this clearance to become zero because complete loss of torque will result. When the clearance "C" becomes low, again adjust to $1/64$ " by turning screw "E". No change in torque will result from this adjustment. Brake linings should be renewed before the lining wears down to approximately $1/4$ ", so that the groove pins do not contact the brake wheel surface.

Size of Brake	Torque Rating	Compressed Length of Spring "D"
7"	50 lb-ft	2.31
	75 lb-ft	2.05
	85 lb-ft	2.29
	110 lb-ft	2.17





SKETCH 'A'



RENEWAL PARTS – Information Required

Parts **CANNOT** be sent promptly unless you include the **FOLLOWING** with your order: **PUBLICATION NUMBER, ITEM NUMBER, PART NUMBER, DESCRIPTION, AND COMPLETE NAMEPLATE DATA ON THE BRAKE**

Item No.	Description of Part	No. Req'd	Part Number	Item No.	Description of Part	No. Req'd	Part Number
1	Spacer	2	29-1440-2	25	Movable Contact Plate	2	21-291
2	Neoprene Sleeve	1	18-615-15		Lockwasher	2	916-484Z
3	Pin	1	13-317-10	26	Insulator	1	56-3574
4	Spring Pin, .125 x 75 long	4	13-3187-2	27	Spring	2	69-2167
5	Lever	2	24-2674-2	28	Switch Complete (Includes Items 19 thru 27)	1	10-1510-4
6	Pin	1	13-1145-13	29	Pin	1	13-620-5
7	Washer	2	916-1081Z	◆ 30	Coil (give number on coil)	1	—
8	Adjusting Stud Nut	1	15-776	31	Solenoid Frame	1	17-10473
9	Spring Gland	1	49-3029	32	Coil Washer	2	16-254
10	Adjusting Screw	1	11-302-2	33	Spring	2	69-273
11	Block	1	17-516	34	Plunger Guide	2	54-300-2
	Locknut	1	15-300	35	Bracket	1	79-415
	5/8 Washer	1	916-1281Z		1/4-20 Screw x 1.75 hex		
◆ 12	Spring				Screw	1	911-5452Z
	50-75 lb-ft torque	1	69-297		Hex Nut	1	915-24Z
	85-100 lb-ft torque	1	69-761		Lockwasher	1	916-682Z
13	Groove Pin	12	13-4762	36	Spring Pin	2	13-3186
◆ 14	Brake Wheel (see below)	1	—	37	Pin	1	13-7700
15	Shoe complete	2	48-1200-3	38	Washer	2	916-801Z
	Lining (for cast Iron shoes)	2	48-1199-2	39	Bearing	2	20-102-2
16	Base	1	17-10476	40	1/2 x 20 Hex Nut	2	15-132
17	Pin	2	13-482	41	Plunger complete (Includes Items 35 thru 40)	1	51-93-15
	Cotter Pin	4	913-81Z	42	Link	1	51-1151
18	Shim Washers	3	16-319	◆ 43	Spring (outer)	1	69-296
19	Insulator	1	56-3574	44	Spring (inner)	1	69-2910
20	Pin	2	13-2107-5	45	Solenoid without Coil (Includes Items 31, 32, 33, 34, and 41)	1	88-521-5
21	Stationary Contact Plate	4	21-716	46	Renewal Set of Linings (Includes Item 13)	1	6-166-5
	6-32 x .31 binding hd screw	4	11-1722				
22	Not Used						
23	#10 Retaining Washer	2	16-2038-4				
24	#10-32 x 1.37 long Screw	2	911-524Z				

◆ We recommend that these items be stocked. The quantity to be stocked will depend upon the total number in use.

● Give Catalog "H" number when stamped on the wheel, or if this number does not appear on the wheel, give complete brake nameplate data and bore and keyway dimensions.