



Enclosed Wet Brake

Enclosed Parking/Service Brake
for Mining Equipment

- Longer wearing friction material
- Higher speeds
- Greater Productivity
- Proven lower drag than competition
- Less drain on batteries
- Less self generated heat
- Meets OEM specifications
- Employee company
- Brakes shipped from inventory
- Rebuilding service
- 35 years in the coal market

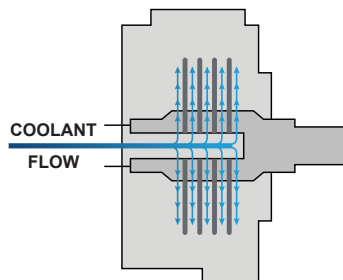


PT Tech's A+ Hydraulic Brake continues to outperform the competition. Since its introduction in 1999, this wet brake has come to be known as "The Brake That Lasts". Its through shaft cooling dramatically increases its survivability. Through experience gained on other brake designs and in-house testing PT Tech quantified the difference between brakes with and without through shaft cooling.

This single brake performs two distinct functions: a spring-set Parking Brake and a master cylinder operated Service Brake for underground mining vehicles.

Mining Applications:

- Continuous Miners
- Shuttle Cars
- Longwall Shearers
- Roadheaders
- Chain Tensioners



Performance

Service Brake Torque*	1,200 lb-in per 100 psi
Parking Brake Torque#	13,000 lb-in
Max. Service Brake Pressure	1,400 psi
Min. Parking Brake Release Pressure	275 psi
Max. Parking Brake Release Pressure	2,200 psi
Recommended Hydraulic Fluid	30 wt.

*Note: Torque values will be adversely affected by hydraulic oils with friction modifiers or EP additives.

Directly Replaces Ausco® On Mining Vehicles

- Thru Shaft Cooling
- Increase Braking Torque

Spare Parts Kits

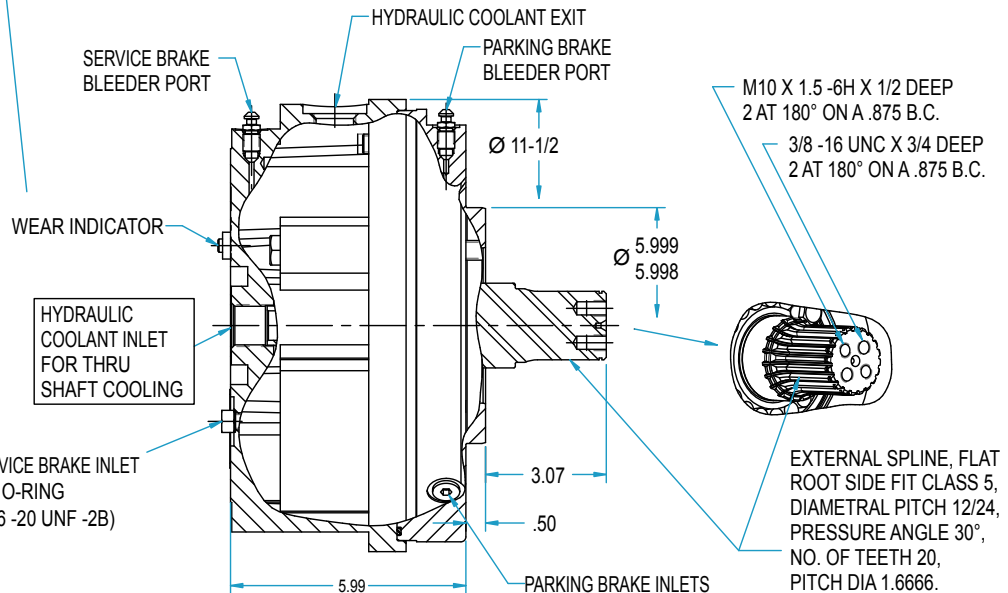
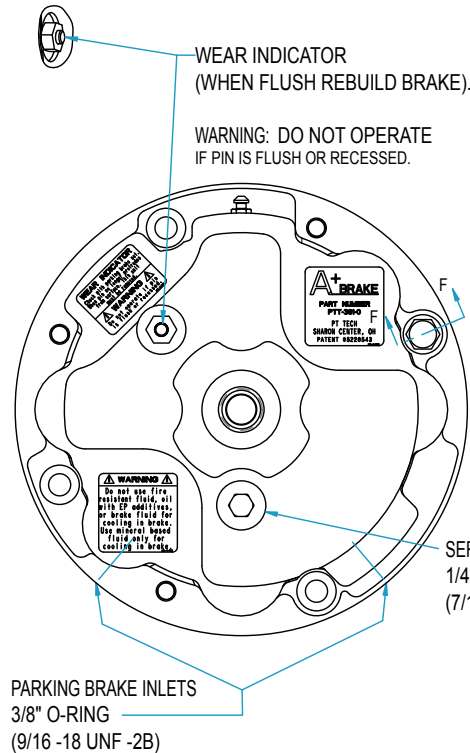
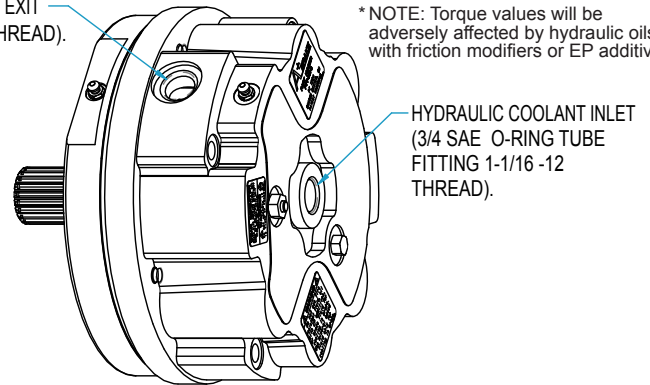
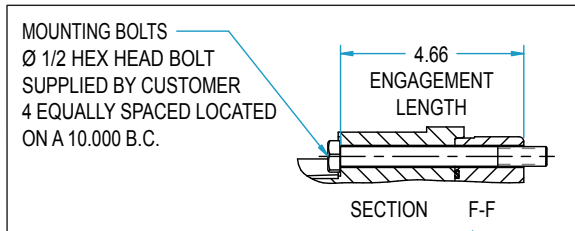
PTT-381-0	Complete Brake Assembly
PTT-381-60	Bearing & Seal Repair Kit
PTT-381-61	Replacement Disk Pack
PTT-381-08	Replacement Shaft
PTT-381-64	Hardware Kit
PTT-381-65	Compression Plate Kit
PTT-381-66	Wear Indicator Kit
PTT-381-67	Spring Kit

Performance Data

Service Brake Torque*	1,200 lb-in per 100 psi
Parking Brake Torque#	13,000 lb-in
Max. Service Brake Pressure	1,400 psi
Min. Parking Brake Release Pressure	275 psi
Max. Parking Brake Release Pressure	2,200 psi
Recommended Hydraulic Fluid	30 wt.

HYDRAULIC COOLANT EXIT
(1-1/16 -12 UNF-2B THREAD).

* NOTE: Torque values will be adversely affected by hydraulic oils with friction modifiers or EP additives.



1441 Wolf Creek Trail • P.O. Box 305
Sharon Center, OH 44274-0305 USA
330-239-4933 • fax 330-239-2012 • www.pttech.com

